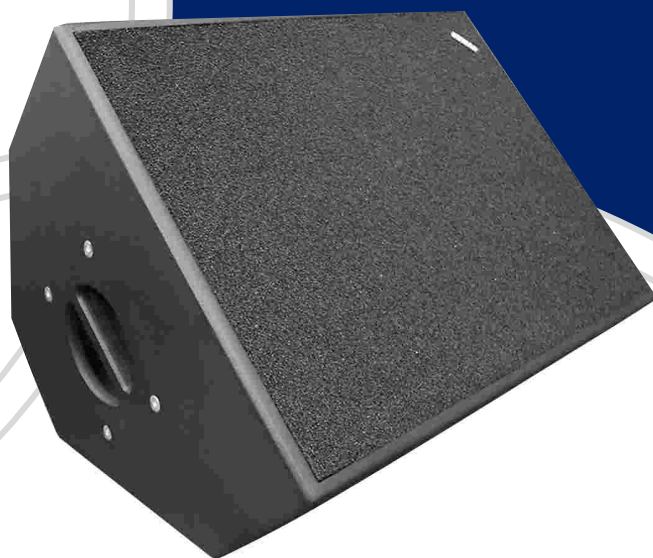


Stage 15 Plus

TECHNICAL SPECIFICATIONS

Frequency Response	(-10 dB) (±3 dB)	59Hz ÷ 19.7kHz 75Hz ÷ 19.2kHz
Average Dispersion		
500Hz ÷ 10kHz		95° x 95° (HxV)
>5 kHz		100° x 55° (HxV)
500Hz ÷ 4kHz		95° x 110° (HxV)
Impedance (ohms)		
Tot (min)	8	(7.0 @ 165 Hz)
Max Sensitivity (dB SPL 1W 1m)		
		101 (Full-space)
		104 (Half-space, bass only)
Power - Watts AES	Cont.	Peak
	350	1400
Max Output Level (calculated)	Cont.	Peak
	126	132 (Full-space)
	129	135 (Half-space, bass only)
Loudspeakers and Loading		
LF:		1x15" High pass Vented box.
HF:		1x1" Exit (1.75" diaphragm). OUT 2, Horn loaded.



PHYSICAL PROPERTIES

Product type	Wide-range compact loudspeaker system: two-ways/two-speakers, medium power, short throw, with built-in passive filter, for stage monitor use.
Enclosure Material and Finish	Asymmetric enclosure in 15 mm. Plywood with internal bracing, rounded corners, integral handles and rotating speaker baffle. Scratchproof paint.
Standard accessories	Highly resistant vibration-free protective perforated aluminium grill covered in black foam; 1 handle; internal support tube/stand housing; flying points with nutplates. Neutrik Speakon NL4FC connector.
Protection	Electronic, only when the dedicated Outline processors are used with limiter functions.
LF:	6.3A fast fuse and LC network
HF:	2.5A fast fuse and RLC network
Optional accessories	Outline BP40 stand with air-cushioned lowering; brackets for wall or ceiling mounting.
Connectors	2xNL4 Speakon in parallel:
LF:	Pin 1+ pos; Pin 1- neg
HF:	Pin 2+ pos; Pin 2- neg
Weight (Kg)	
Net (gross)	26.5 (30)
Dimensions (cm)	
Height (with packing)	47.5 (54)
Width (with packing)	61 (68)
Depth (with packing)	40 (46)

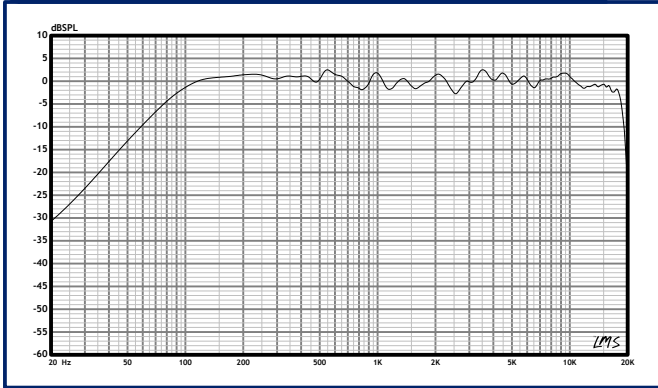
FEATURES

- Wide range high efficiency 2-way loudspeaker system with built-in crossover.
- 15" woofer with reflex loading and compression driver with Outline OUT2 1.75" mm voice coil; controlled directivity wide dispersion horn (95° x 95°, from 500Hz to 1kHz).
- Cabinet with two inclinations (30° and 45°) and hardware for various fixed mounting or flying requirements. Housing for fitting a stand.
- Rotatable front panel can be turned through 180° on its axis to match two units' horns, while keeping both with the same inclination (left-right monitoring).
- Scratch-resistant black painted birch plywood cabinet.
- High SPL value (135 dB peak SPL@ 1 m) and flat response in the entire audio range.

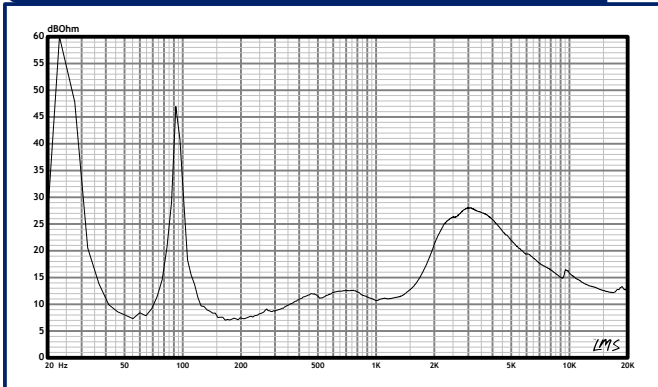
APPLICATIONS

- Stage monitor for near field use with instruments and vocals.
- Drum monitor along with dedicated subwoofer.
- Applications with groups, bands and orchestras.
- Clubs and discos, along with a subwoofer or low frequency reinforcement unit.
- High quality sound reinforcement in gymnasiums for fitness, aerobics, etc.
- Other applications requiring high dynamics, if used along with back-up subwoofer or low frequency unit.

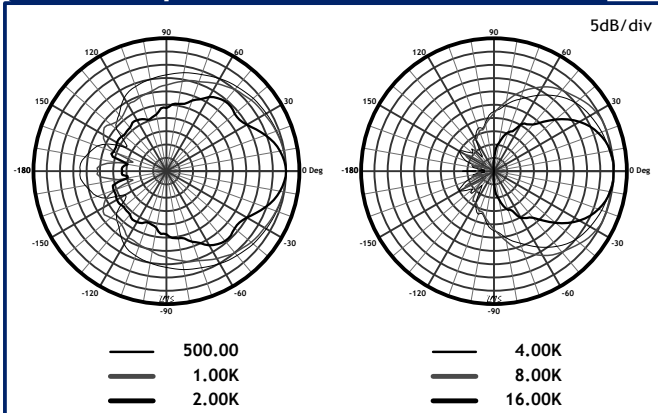
frequency response



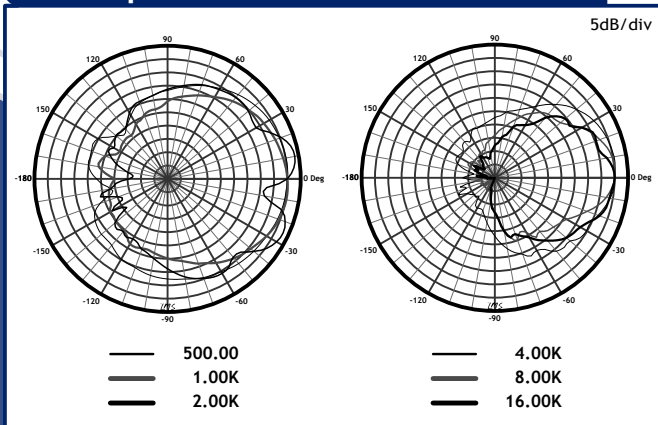
impedance



horizontal polars



vertical polars



DESCRIPTION

Compact wide range 2-way loudspeaker system with low-loss passive crossover with built-in overload protection, optimised for floor standing or flying stage monitor use with two different inclinations. Made up of a 15" woofer for low and mid frequencies with a 3" copper voice coil and a compression driver with protection against miswiring mounted in series, 1.75" duraluminium diaphragm and 1" throat for the high frequencies, loaded with a controlled directivity wide dispersion horn.

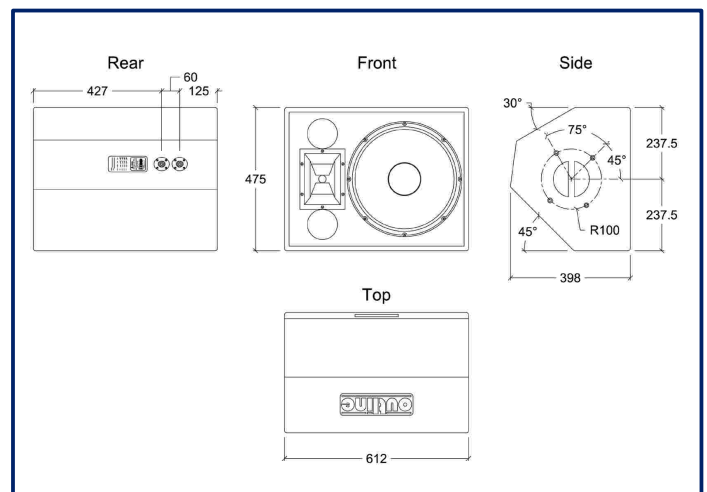
The enclosure can be driven in passive biamping (or active, by just disconnecting the built-in filter) with lower distortion at high sound level in the high frequency section. Loading for the low frequencies is of the phase inversion with tuned chamber type. Directivity is uniform for the majority of the audio range, with average dispersion of 95° H x 110° V in the speech frequency range (500Hz ÷ 4000Hz) and very uniform average wide range sound coverage (95° H x 95° V) from 500Hz to 10kHz. The useable frequency band at -10dB goes from 59Hz to 19.7kHz. The complete system's frequency response measured on-axis, according to AES standards, is within +/-3 B from 75Hz to 19.2kHz.

The linearity of the response makes the enclosure also suitable for applications other than stage monitor use, such as general top quality high-pressure sound reinforcement use, particularly when used along with a subwoofer system with adequate performance. Hung in full space according to AES standards and driven with 1W at rated impedance via the built-in passive crossover, the system has a high average wide band sensitivity, producing 101dB SPL at 1m, and is able to give a maximum peak sound pressure of 132dB SPL in the same acoustic conditions, driven at maximum peak power (1400 Watts), while at minimum impedance (7 Ohms), it can handle 350 Watts (continuous) AES. With the system standing on the floor in 2π conditions, the values of the low frequency section rise by 3dB SPL with the same driving power, reaching 104dB SPL at 1m and 135dB SPL peak at full power. With passive biamping, i.e. driving the low/mid section and the high frequency sections separately, these maintain or exceed the enclosure's performance with just one amplifier, including maximum power handling capacity. The asymmetric cabinet is built in high quality 15mm Baltic plywood, reinforced with suitably positioned internal bracing which eliminates the resonance of the larger sides.

The front panel on which the loudspeakers are mounted can be removed and turned through 180° to form a symmetric left-right stage monitor system, or also to match the horns while keeping the same inclination with two enclosures. External dimensions are very small, particularly bearing in mind the performance, which is really high. The black outer finish is in high quality scratch-resistant paint.

The connectors are 2 Neutrik Speakon NL4, whose contacts are interconnected to facilitate driving two enclosures in parallel. Contacts 1+ and 1- are for the low/mid section and 2+ and 2- for the high section. The cabinet has 4 threaded hanging points with a diameter of 8mm (M8) to facilitate horizontal or vertical flying using the appropriate optional accessories. On the bottom panel, the cabinet is fitted with a die-cast aluminium socket for fitting an optional tripod stand; a useful handle on the top panel ensures a positive grip during handling.

The frontal grille is made up of vibration-free aluminium mesh mounted on a wooden frame and covered in special acoustically transparent foam. The market name of the enclosure is STAGE 15 PLUS.



loudspeakers

Stage 15 Plus

outline

Via L. da Vinci, 56 - 25020 Flero (Brescia) Italy
tel. +39 030 3581351 - fax +39 030 3580431
www.outline.it - e-mail: info@outline.it